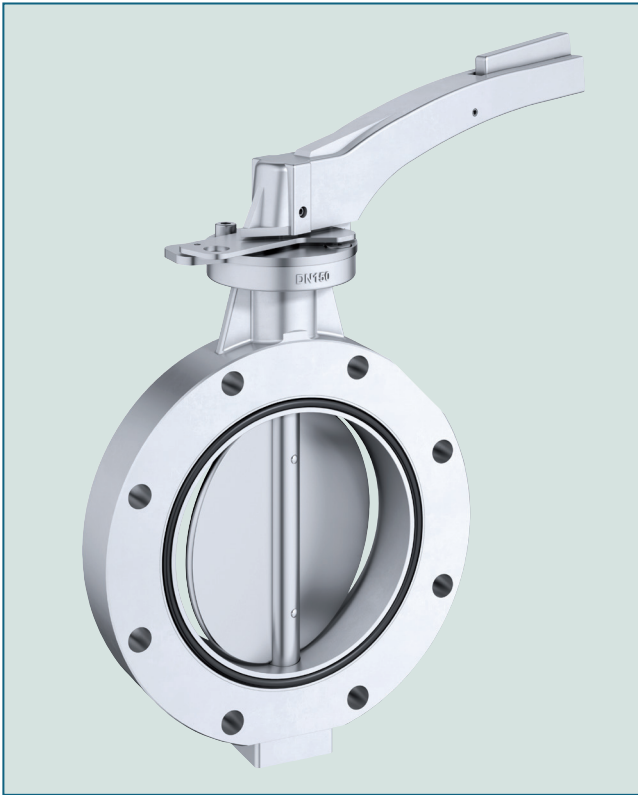


# WAFER TYPE BUTTERFLY VALVE TW-M



Bonded, metall seated wafer type butterfly valve TW-M for tank lorries.

## TECHNICAL DATA

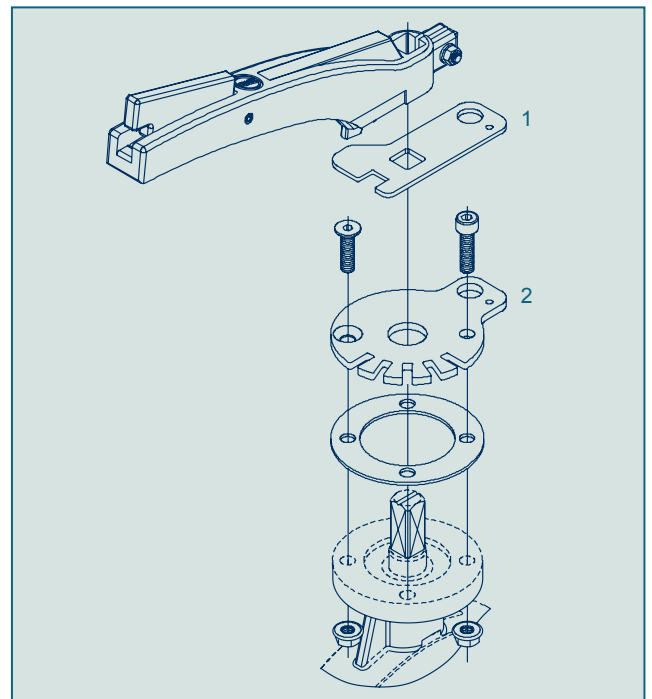
|                        |   |
|------------------------|---|
| Nominal diameter:      | DN 80 - DN 300  |
| Face-to-face:          | EBRO works standard   |
| Flange accommodation:  | EN 1092 flanges for tank lorries<br>Customer-specific<br>PN 6/10/16 |
| Flange Surface Design: | EN 1092 Form A/B<br>ASME RF   |
| Top flange:            | EN ISO 5211   |
| Marking:               | EN 19   |

## FEATURES

- Maintenance-free
- Triple shaft bearing
- One-piece precise slotted shaft
- All parts being in contact with the media. Corrosion resistant and FDA-approved
- Bonded plate (optional)
- Can be installed in any desired position
- Sealing of the flange surfaces by means of integrated o-rings
- Cavity-free

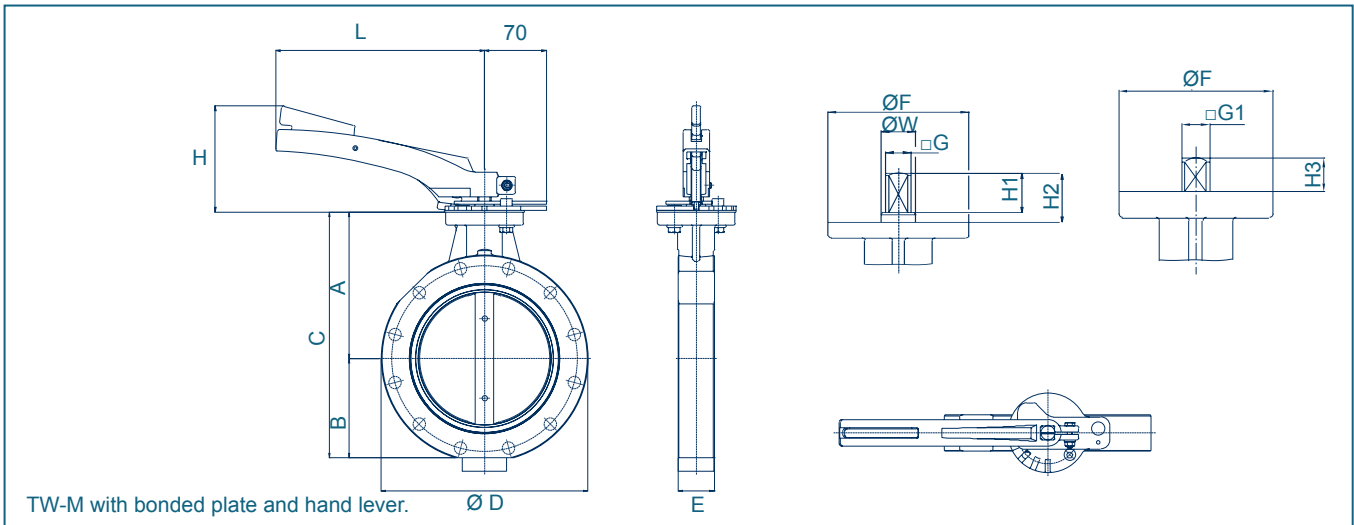
## GENERAL APPLICATIONS

- Tank lorries
- Silo constructions
- Granulate handling
- Food industry
- Control of product streams



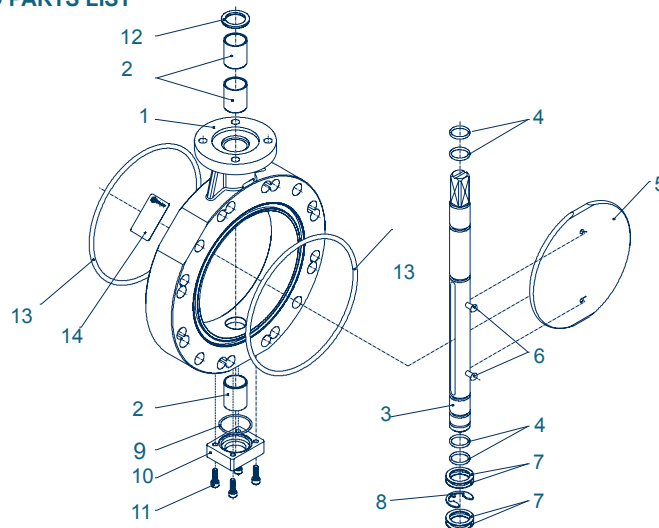
1 - Sealing ear  
2 - Bonded notch lever

# WAFER TYPE BUTTERFLY VALVE TW-M



| DN [mm] | Size [in] | Dimensions [mm] |     |     |     |    |     |    |     |     |    |    |    |     |    | Weight [kg] |
|---------|-----------|-----------------|-----|-----|-----|----|-----|----|-----|-----|----|----|----|-----|----|-------------|
|         |           | A               | B   | C   | ØD  | E  | ØF  | □G | □G1 | H   | H1 | H2 | H3 | L   | øW |             |
| 80      | 3         | 125             | 97  | 222 | 154 | 36 | 88  | 14 | 14  | 98  | 30 | 39 | 17 | 195 | 18 | 2,8         |
| 100     | 4         | 130             | 97  | 227 | 176 | 36 | 88  | 14 | 14  | 98  | 30 | 39 | 17 | 195 | 18 | 3,2         |
| 150     | 6         | 166             | 127 | 333 | 234 | 41 | 88  | 16 | 17  | 120 | 36 | 45 | 19 | 236 | 22 | 5,1         |
| 200     | 8         | 195             | 152 | 347 | 274 | 51 | 88  | 16 | 17  | 120 | 36 | 45 | 19 | 236 | 22 | 8,5         |
| 250     | 10        | 266             | 179 | 445 | 328 | 66 | 125 | -  | 22  | -   | -  | -  | 24 | -   | -  | 16,3        |
| 300     | 12        | 291             | 204 | 495 | 378 | 66 | 125 | -  | 22  | -   | -  | -  | 24 | -   | -  | 20,0        |

## MATERIAL SPECIFICATION AND PARTS LIST



| Pos. | Description      | Material        | Material-No | ASTM | Pos. | Description           | Material        | Material-No | ASTM |
|------|------------------|-----------------|-------------|------|------|-----------------------|-----------------|-------------|------|
| 1    | Body             | Aluminium       | 1.4541      |      | 8    | Seeger-retaining ring | Stainless steel | A2          |      |
| 2    | Bearing sleeve   | iglidur G       |             |      | 9    | O-ring                | Viton           |             |      |
| 3    | Shaft            | Stainless steel | 1.4418      |      | 10   | Cover plate           | Aluminium       |             |      |
| 4    | O-ring           | Viton           |             |      | 11   | Screw                 | Stainless steel | A4          |      |
| 5    | Disc             | Stainless steel | 1.4541      |      | 12   | Wiper ring            | PTFE            |             |      |
| 6    | Half-round-rivet | Stainless steel | A4          |      | 13   | O-ring                | NBR             |             |      |
| 7    | Adjusting washer | Stainless steel | A2          |      | 14   | Rating plate          | PVC silver      |             |      |

Subject to change without notice